



**Issue #30**

**February 2018**

SASS ACCOUNTING, LLC  
221 E. Green Bay Avenue  
Saukville, WI 53080  
262-235-4250  
[www.sassaccounting.com](http://www.sassaccounting.com)



**In this Issue**

**Sass Accounting's  
25th anniversary!**

**Schedule your  
Appointment**

**E-filing and  
Returns**

**ACA Will Affect  
2017 Returns**

**2018 Mileage Rates**

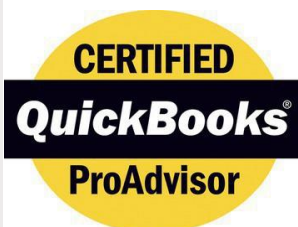
**2018 Tax Law  
Changes**

**Tips and Tricks**

Dear Client,

Welcome to our 30th edition of our quarterly newsletter. We hope you find these to be informative and useful. We have reviewed our records and made every attempt to ensure that we have used the correct email address for you. If however, you have received duplicates or prefer to have this newsletter delivered to a different email address, please let us know.

Please note, if you have emailed our office and have not received a response within 2 business days, please contact us as one of two things may have happened: we didn't receive your original email or you didn't receive our response.



**Quick Links**

[IRS - Internal Revenue  
Service](#)

[Laurie Ziegler](#)

[Energy Star Tax Credits](#)

[EA ProAdvisor](#)

[Information](#)

[State of Wisconsin  
Dept. of Revenue](#)

**ENROLLED AGENT** | AMERICA'S TAX EXPERT  
NATIONAL ASSOCIATION OF ENROLLED AGENTS

[Laurie Ziegler  
Enrolled Agent](#)

## January 20th marked the 25th anniversary of Sass Accounting!

January 20, 1993 -

This was the day that we had our first sale. We started with \$100 in a bank account and business cards that were posted in restaurants, laundromats, grocery stores—anywhere we could.



Over the years, we made several moves. Our first location was in Laurie's home. After that, we had 3 different offices in Grafton before buying a building. This would be our location for more than 13 years.

After several years of searching, an appropriate building was found for our next location. June 4, 2012 marked the first time in our history that Sass Accounting, LLC was not located in Grafton. Our current location is in downtown Saukville.

Laurie began supporting QuickBooks in 1996. Since then, she has become a Certified ProAdvisor and has over 100 clients that use the software. Laurie is also very involved in her professional societies and local non-profits.

We are very involved in the community. Business relationships and networking have been extremely important in growing the practice. Sponsorships and participation in fund-raising efforts is our way of giving back. We have been very blessed.

In 2003, Laurie became an Enrolled Agent. They are the only federally authorized tax practitioners. EAs have unlimited practice rights before the IRS, which means they can represent clients for any tax matter. Our first year business, we had 10 clients. In 2017, we served over 200 businesses and 600 individuals. We have grown from an in-home office with one computer and a dot-matrix printer to a 1,200 square foot office building that houses a complete computer network and telephone system as well as file storage and a conference room. A business that was started by one person now employs four people who have a passion for what they do and who they help.

We are grateful for those who have put their trust in us for the past 25 years and look forward to serving our clients in the future.

## Schedule your appointment



Tax season is here! Please see our website for the [Sass Accounting Tax Season Schedule](#). Be sure to call (262) 235-4250 and schedule your appointment early as we fill up fast!

Some things to keep in mind when making your appointment:

-If you cancel your appointment less than 24 hours in advance, you will receive a \$46.00 "No Show" fee.

-Clients not arriving on time for their appointment will be charged a fee of \$23. Those not arriving within 15 minutes of their appointment time may be required to reschedule and be subject to a \$46.00 No Show fee.

-If you contact our office to schedule an appointment or drop off your tax documents without an appointment after 2/28/18 (for business taxes) or 3/30/18 (for personal taxes), you may be assessed a late fee of \$46.00, \$69.00 after the 5th of the month, \$92.00 after the 10th of the month; or receive an automatic extension at our discretion.

**~1120/1120S Corporations & Partnerships - your tax returns are due 3/15/18.**

In preparing for your tax appointment, please make sure we have your updated contact information. You may call (262) 235-4250 or email [Jen@sassaccounting.com](mailto:Jen@sassaccounting.com) to give us your current phone numbers, address, and email address. If you are unsure about the weather conditions on the day of your appointment, call the office prior to coming. When preparing for your appointment, please [reference our website](#) where you will find answers to many of your questions. We hope to see you soon.

In order for Sass Accounting to complete your 2017 Taxes, we are required to have every client sign a Healthcare Coverage Questionnaire (ACA Form) and submit it to us at the time of your appointment. This must be done BEFORE we can file your taxes. Please use the link below to download the form, fill it out and return it to us.

[CLICK HERE for the ACA Addendum Form.](#)

The 1099-G (documentation of your prior year state refund) from the State of Wisconsin is available online from the Wisconsin Department of

Revenue: <https://www.revenue.wi.gov/eserv/Form1099G/index.html>. Please print your 1099-G and bring it to your tax appointment.

Prior to coming in for your appointment, PLEASE OPEN & DISCARD ALL ENVELOPES! This not only will save us time, but will keep costs down.

**For 2018 ~ Sass Accounting will continue to offer you free E-filing on all income tax returns!**

## E-Filing and Returns

Over the past few years, the IRS has found the 90% of all e-filed tax returns were received within less than 21 days after filing. This time frame does not apply to returns that are mailed to the IRS. If you claim the Earned Income Tax Credit (EITC) or Advanced Child Tax Credit (ACTC), here's the latest news for you directly from the IRS:

The IRS will begin processing EITC/ACTC returns starting Feb.15. The IRS cautions taxpayers that refunds likely won't arrive in bank accounts or debit cards until the week of February 27 -- if there are no processing issues with the tax return and the taxpayer chose direct deposit.



Checking the status of your refund:

If you would like to check the status of your return, you may go to the Where's My Refund section of the IRS website. In order to use this website, you must follow the following rules:

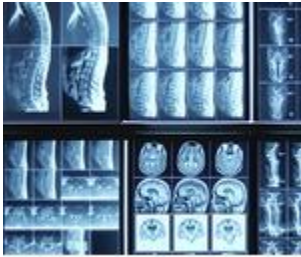
- You must wait 72 hours after you e-file or 4 weeks if you mail in your return
- You need to have available your social security number, your filing status and the exact amount your return showed you would be refunded

Please keep in mind that the projected refund date may change as your return is moved through the system.

You can also check the status of your Wisconsin refund at the Wisconsin Department of Revenue website Refund Inquiry page <https://ww2.revenue.wi.gov/RefundInquiry/request.html> or the new DOR mobile app. The WI Revenue mobile app allows you to use a number of their popular tax-related online services found on their website, such as: Refund look-up, estimated tax payment status, updates & more. <http://www.revenue.wi.gov/mobile/>

**Important: If you receive a notice regarding your taxes, either from the IRS, or the state, we NEED to see it! Please bring in, email, fax, or mail us the original notice that you have received right away. We will look it over and get back to you with instructions on how to proceed.**

## ACA Will Affect 2017 Tax Returns



### Form 1095B and 1095C Delays

IRS has listened to the insurance companies and businesses who are required to issue Forms 1095-B and 1095-C this year. They have expressed concern over accurately completing the forms and getting them out to taxpayers (and to IRS) by their due dates. IRS has granted an extension for the issuance of these forms for the 2017 calendar year. Form 1095-B & 1095-C are NOT needed in order to complete your tax return. However, those who have insurance obtained through the Market Place will be receiving a 1095-A and we CANNOT complete your tax return without it whether or not you had advance payment tax credit.

[ACA Addendum Form](#)

## 2018 Mileage Rates

Please note that we have included the 2017 and 2018 mileage rates for your comparison.

| Mileage         | 2017 Rate/Mile | 2018 Rate/Mile |
|-----------------|----------------|----------------|
| Business Travel | 53.5¢          | 54.5¢          |
| Charitable Work | 14.0¢          | 14.0¢          |
| Medical/Moving  | 17.0¢          | 18.0¢          |



## 2018 Tax Law Changes



As of January 1, 2018, \$10K per year per student can now be withdrawn from 529 plan for elementary or secondary education.

Entertainment expense is not deductible for businesses (including self-employed).

No more 2 % miscellaneous itemized deductions - including tax preparation fees, investment expenses, employee business expenses (i.e. Form 2106), safe deposit box, etc.

[Read more about the 2018 tax law changes.](#)



## Here is some additional information for you to review - just click on the topic below



### [Security at Tax Time & ID Theft Awareness Week](#)

Make sure your friends and relatives can find a qualified tax professional! The new and improved EA directory is now available at <http://taxexperts.naea.org/> feel free to share with your friends and relatives.

### [Common Scams and How To Avoid Them](#)

### [6 Reasons Your Tax Return Might Get Audited](#)

IRS Get Transcript App - An easy way to print or download your IRS transcripts <https://www.irs.gov/individuals/get-transcript#!>

WI Revenue Mobile App - A quick way to check your estimated tax payment status, refund status and more. <http://www.revenue.wi.gov/mobile/>

Free Electronic Donation Tracking - An easy way to keep track of donations throughout the year <http://www.amazinggoodwill.com/donating>

### [Tips For Charitable Contributions](#)

MileIQ The smart mileage tracker - An easy way to track your mileage. <https://www.mileiq.com/>

Certain Medicaid Waiver Payments may be excludable from income. [Read more here](#)

Microsoft Office Lens app - an easy way to scan documents with your mobile device  
<https://microsoft.com/en-us/store/apps/office-lens/9wzdncrfj3t8>

### [2018 Tax Law Changes](#)

*We hope you are enjoying the Sass Accounting newsletter. Don't forget to check us out on the web at [www.sassaccounting.com](http://www.sassaccounting.com) and find us on [Facebook](#) so you can stay up-to-date. Please feel free to forward this to your family and friends.*

*We look forward to continuing to assist you with your accounting and tax needs, as well as any questions or concerns you may have. Have a wonderful winter!*

View this email [online](#) if it doesn't display correctly



*Simply click the link above and send a blank email from your email account. You will get a confirmation email in reply.*